

# Drinking Water Faucets

Premium Designer Tapware

**i** The width (W) refers to the dimension from the centre line of the tap body to the centre of the spout.

## Standard Filter Faucets

Included with your purchase of an Undersink Filter System. All our Standard Filter Faucets feature a bright chrome finish and are fitted with an included base plate.



### Spring Loaded

H 210mm x W 200mm  
Long Reach IT001155



H 240mm x W 200mm  
High Loop IT001161



H 250mm x W 135mm  
IT001175



### Fin

with Filter Life Indicator  
IT002961



H 230mm x W 150mm  
Long Reach IT001156



### Euro

H 245mm x W 135mm  
High Loop IT001157



H 25cm x W 16cm  
IT001692

### Metro



H 195mm x W 100mm  
IT001177

### Petite



H 280mm x W 180mm  
IT002948

### Antique



H 290mm x W 150mm  
IT001162

### Mode



H 235mm x W 125mm  
IT003638

### Retro



H 245mm x W 125mm  
Ambient & Cold IT001170

### Dual

# Drinking Water Faucets

## **NEW** Matte Black Filter Faucets



**Petite**

H 260mm x W 140mm  
Short IT003623



H 280mm x W 140mm  
Tall IT003622



**Mode**

H 300mm x W 210mm  
IT003624

## Mixers - Hot, Cold & Filtered Faucets

Our Mixers feature a bright chrome finish and are fitted with an included base plate.

### **i** Water Rating Label

The water rating label is displayed against products regulated under the Water Efficiency Labelling and Standards (WELS) scheme.

Our 3 Way, Nova, Side Lever, Stainless Steel Premier and Stainless Steel High Loop Mixers have been registered according to the requirements of the WELS standard (AS/NZS 6400:2016 water efficient products). For more information please visit [www.watershop.com.au/mixers](http://www.watershop.com.au/mixers).



**3 Way**

H 180mm x W 245mm  
IT001165



**Nova**

H 210mm x W 200mm  
IT001980



**Flat**

H 230mm x W 200mm  
IT002849



**Side Lever**

H 325mm x W 195mm  
Standard IT001169



H 365mm x W 203mm  
High Loop IT003855

## Stainless Steel Filter Faucets

Our Stainless Steel Filter Faucets and Mixers feature a brushed chrome finish and are fitted with an included base plate.

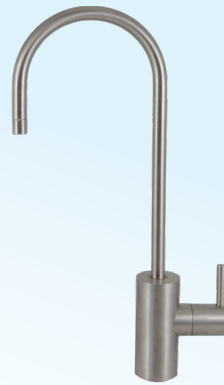


### Classic

H 285mm x W 150mm  
Long Reach IT002826



H 300mm x W 180mm  
High Loop IT002350



### Spring Loaded

H 310mm x W 120mm  
IT003381



### Wheel

H 280mm x W 130mm  
IT003397

## Stainless Steel Mixers - Hot, Cold & Filtered Faucets



H 290mm x W 210mm  
Standard IT002170



### Premier

H 360mm x W 240mm  
Tall IT001678



**Petite**  
H 360mm x W 225mm  
IT002819



**High Loop**  
H 400mm x W 225mm  
IT001166

# Your step by step guide to Installing Your Drinking Water Faucet

## PLEASE READ THESE INSTRUCTIONS CAREFULLY BEFORE ATTEMPTING INSTALLATION

The pure water faucet may be installed on any flat surface over 50mm (2") in diameter. Remember to check the underside of the benchtop location for interference.

**IMPORTANT:** The following instructions are general in nature and may vary from tap to tap. These instructions are **not** for stone or granite benchtops.

### Step by Step Instructions

1. Select a location for your new faucet - Your faucet may be installed on any flat surface over 50mm (2") in diameter. It is recommended to make a small indent using a centre punch to mark carefully the desired drilling location.

2. Drill a hole for the faucet - First drill a 3mm pilot hole. Then drill a 12mm final hole.

Note: It is recommended to use a slow speed drill. Excessive speed may blunt the drill and/or discolour the stainless steel of your sink.

3. Thread the following parts to the base of the faucet in the following order: small rubber washer, chrome plate, black rubber washer (refer to Diagram 1).

4. Place the faucet into the pre-drilled hole on the benchtop.

5. Now thread the remaining parts to the underside of the benchtop in the following order: black locating washer, metal lock washer, nut (refer to Diagram 1). Tighten firmly, ensuring that the faucet is correctly aligned in the desired direction over the sink basin.

**CAUTION:** If the washer or O-ring appears damaged, stretched or crimped it should be replaced at this time. Manufacturers recommend replacing annually. Please contact us if you need any replacement parts.

6. Install female Quick Fit Connector to the end of the faucet and connect tube (refer to Diagram 2).

Diagram 1

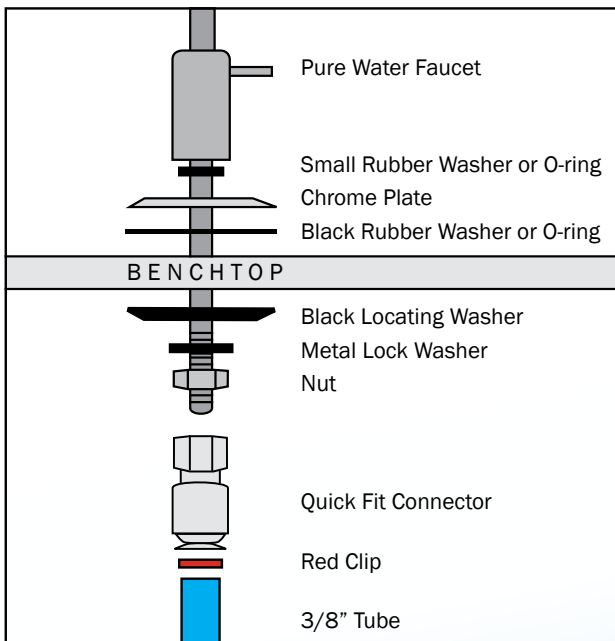
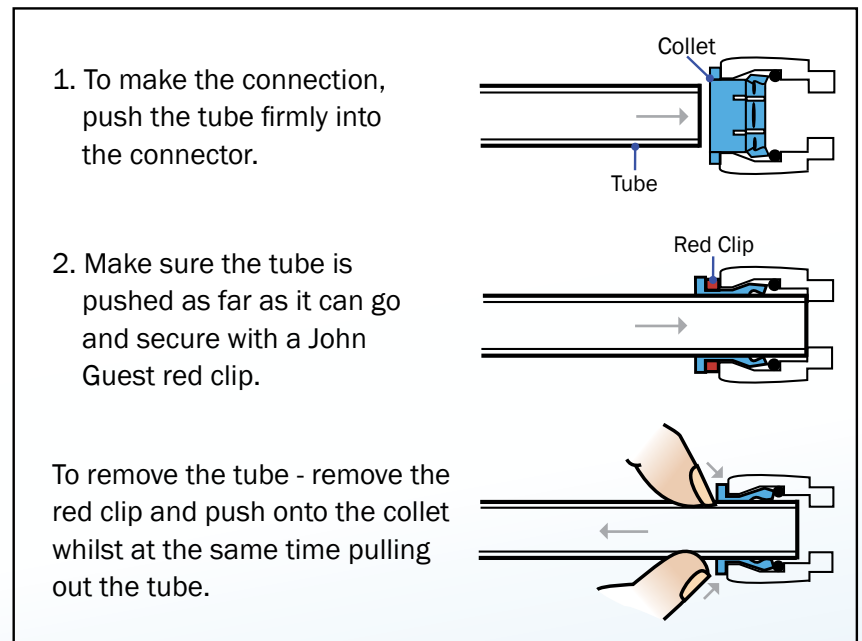


Diagram 2



North Shore Showroom  
425 Miller Street, Cammeray NSW 2062

Inner West Showroom  
350 Parramatta Road, Stanmore NSW 2048

02 9458 1111 sales@watershop.com.au www.watershop.com.au